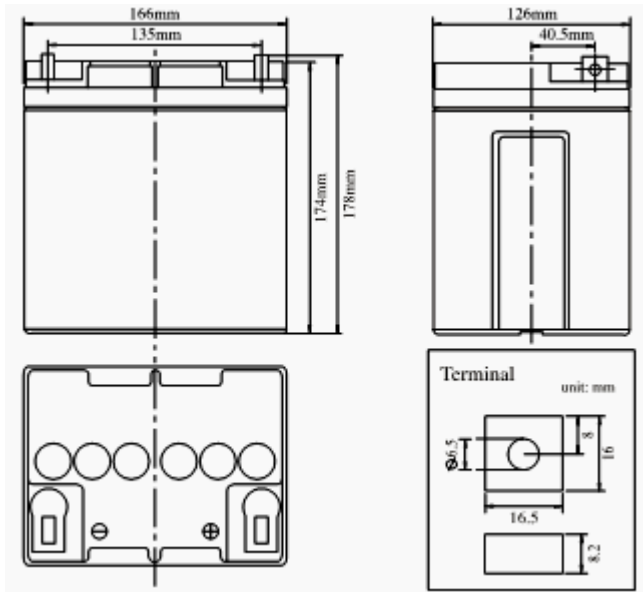


**Product Image**



**Product Dimensions**



**Characteristics**

Nominal Voltage		12V
Nominal Capacity (10 hour rate)		25Ah
Capacity 25°C (77 F)	20 hour rate (1.39A)	27.8Ah
	5 hour rate (4.6A)	22.9Ah
	1 hour rate (16.6A)	16.6Ah
Internal Resistance	Full Charged Battery 25°C	≤14mΩ
Capacity affected by Temperature (10 hour)	40°C (104 F)	102%
	25°C (77 F)	100%
	0°C (32 F)	85%
	-15°C (5 F)	65%
Self-Discharge 25°C (77 F) Capacity	after 3 month storage	90%
	after 6 month storage	80%
	after 12 month storage	62%
Charge (Constant Voltage) 25°C (77 F)	Float	Initial Charging Current Less than 6.0A Voltage 13.6-13.8V
	Cycle	Initial Charging Current Less than 6.0A Voltage 14.4-14.9V

**Packaging**

Battery Dimensions	Length	166mm
	Width	126mm
	Height	174mm
	Total Height	178mm
Box Dimensions	Length	273mm
	Width	178mm
	Height	220mm
Quantity Per Box		2 PC per box
Net weight Per Cell		8.1 kg±100g
Net weight Per Box		16.2kg
Gross Weight		16.6kg

**Discharge Constant Current per Cell (Amperes at 77°F25°C)**

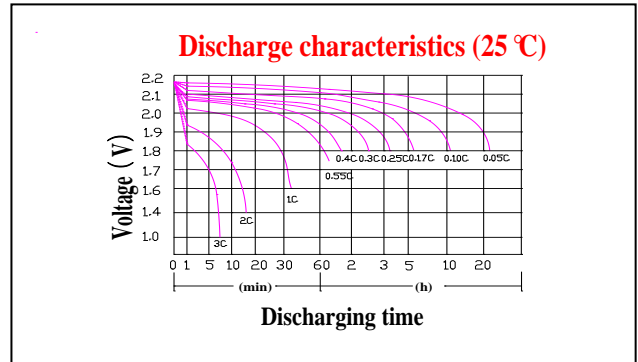
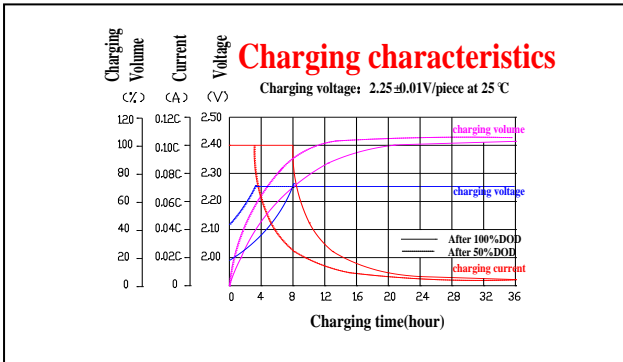
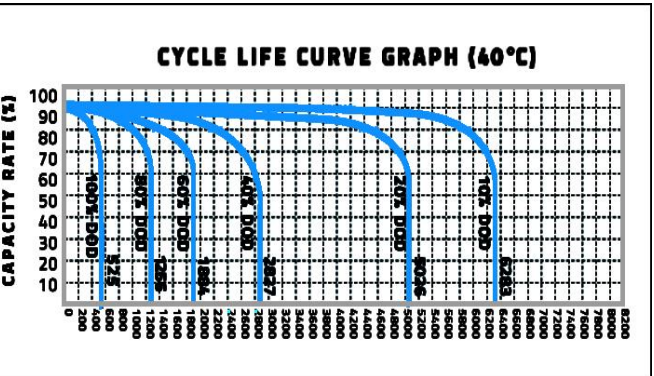
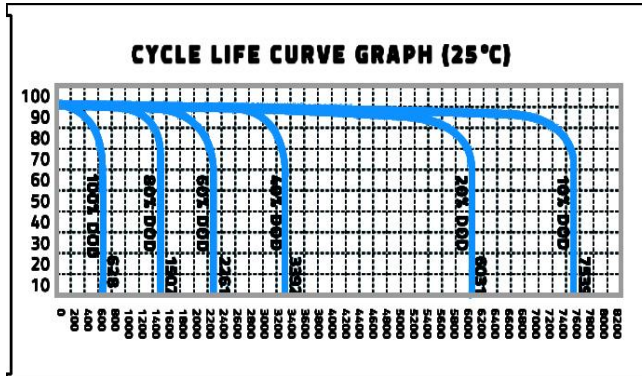
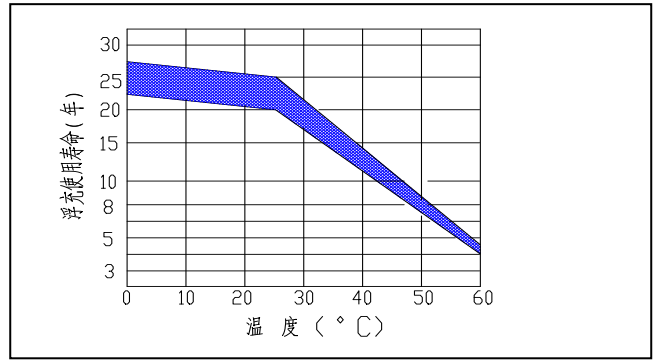
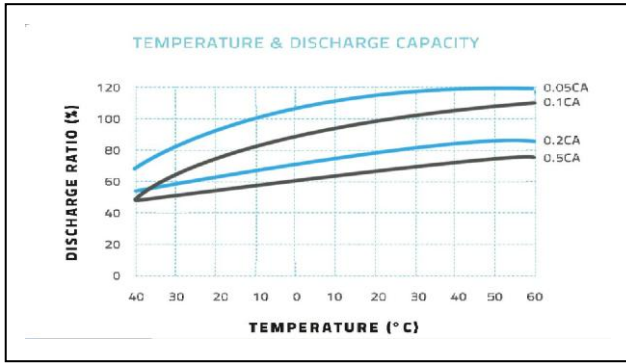
F.V/Time	5min	10min	15min	30min	45min	1h	2h	3h	5h	8h	10h	20h
1.60V	80.7	53.8	40.5	25.2	18.1	16.0	9.7	7.1	4.6	2.8	2.50	1.39
1.65V	75.7	50.4	38.8	24.5	17.6	15.5	9.6	7.0	4.5	2.8	2.47	1.37
1.70V	74.4	49.6	37.1	23.9	17.1	15.1	9.4	6.9	4.4	2.7	2.45	1.36
1.75V	66.8	44.5	35.5	23.2	16.6	14.7	9.2	6.7	4.4	2.7	2.42	1.35
1.80V	63.0	42.0	33.8	22.5	16.2	14.3	8.9	6.5	4.3	2.7	2.40	1.33

**Discharge Constant Power per Cell (Watts at 77°F 25°C)**

F.V/Time	5min	10min	15min	30min	45min	1h	2h	3h	5h	8h	10h	20h
1.60V	150.5	100.3	75.6	47.0	33.7	29.8	18.1	13.3	8.5	5.2	4.7	2.6
1.65V	141.1	94.0	72.4	45.8	32.8	29.0	17.8	13.0	8.4	5.2	4.6	2.6
1.70V	138.7	92.4	69.3	44.5	31.9	28.2	17.5	12.8	8.3	5.1	4.6	2.5
1.75V	124.6	83.0	66.1	43.2	31.0	27.4	17.1	12.5	8.2	5.1	4.5	2.5
1.80V	117.6	78.3	63.0	42.0	30.1	26.6	16.7	12.2	8.1	5.0	4.5	2.5

**Note** The above data are average values, and can be obtained within 3 charge/discharge cycles. These are not minimum values. Cell and battery designs/specifications are subject to modification without notice. Contact **US** for the latest information.

**Performance Characteristics**



**Battery Construction**

Component	Positive plate	Negative plate	Container	Cover	Safety valve	Terminal	Separator	Electrolyte
Raw material	Lead dioxide	Lead	ABS	ABS	Si-Rubber	Copper	Fiberglass	Lead