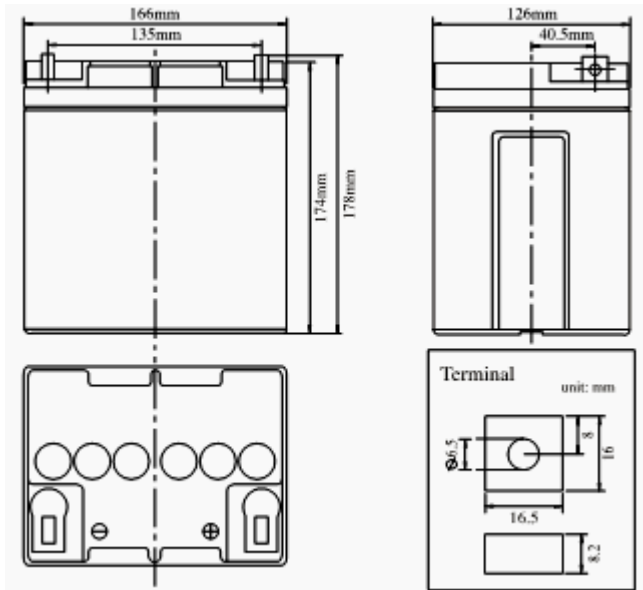


**Product Image**



**Product Dimensions**



**Characteristics**

|  |                           |   |
|--|---------------------------|---|
| Nominal Voltage                                    |                           | 12V   |
| Nominal Capacity (10 hour rate)                    |                           | 25Ah  |
| Capacity<br>25°C (77 °F)                           | 20 hour rate (1.39A)      | 27.8Ah  |
|  | 5 hour rate (4.6A)        | 22.9Ah  |
|  | 1 hour rate (16.6A)       | 16.6Ah  |
| Internal Resistance                                | Full Charged Battery 25°C | ≤14mΩ   |
| Capacity affected by<br>Temperature<br>(10 hour )  | 40°C (104 °F)             | 102%  |
|  | 25°C (77 °F)              | 100%  |
|  | 0°C (32 °F)               | 85%   |
|  | -15°C (5 °F)              | 65%   |
| Self-Discharge<br>25°C (77 °F)<br>Capacity         | after 3 month storage     | 90%   |
|  | after 6 month storage     | 80%   |
|  | after 12 month storage    | 62%   |
| Charge<br>(Constant<br>Voltage)<br>25°C<br>(77 °F) | Float                     | Initial Charging Current Less than 6.0A<br>Voltage 13.6-13.8V |
|  | Cycle                     | Initial Charging Current Less than 6.0A<br>Voltage 14.4-14.9V |

**Packaging**

|                       |                 |              |
|-----------------------|-----------------|--------------|
| Battery<br>Dimensions | Length          | 166mm        |
|                       | Width           | 126mm        |
|                       | Height          | 174mm        |
|                       | Total<br>Height | 178mm        |
| Box<br>Dimensions     | Length          | 273mm        |
|                       | Width           | 178mm        |
|                       | Height          | 220mm        |
| Quantity Per Box      |                 | 2 PC per box |
| Net weight Per Cell   |                 | 8.3 kg ±100g |
| Net weight Per Box    |                 | 16.6kg       |
| Gross Weight          |                 | 17.0kg       |

**Discharge Constant Current per Cell (Amperes at 77°F25°C)**

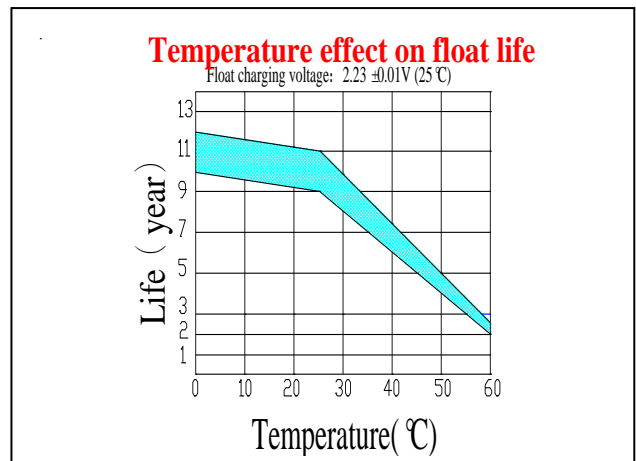
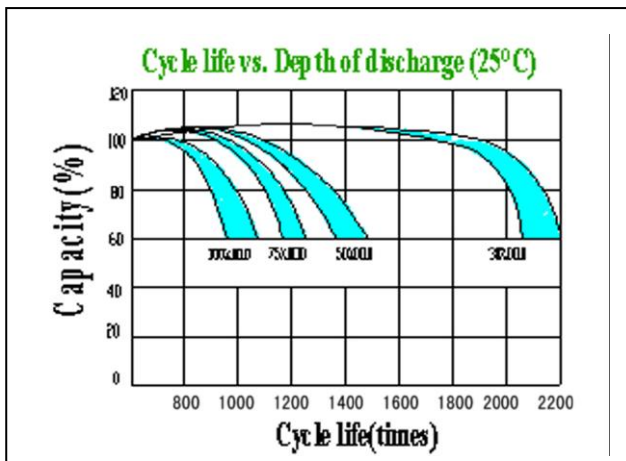
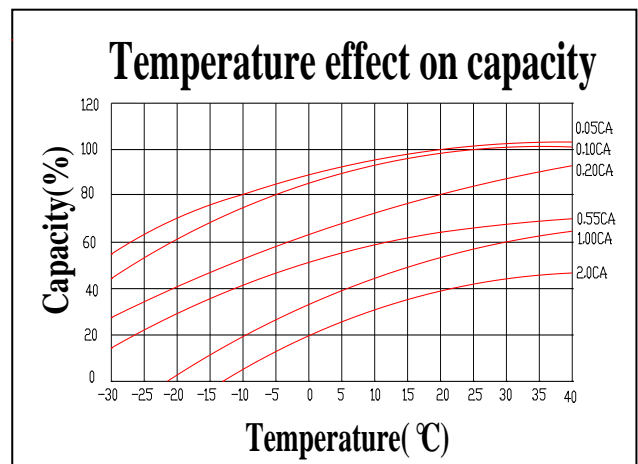
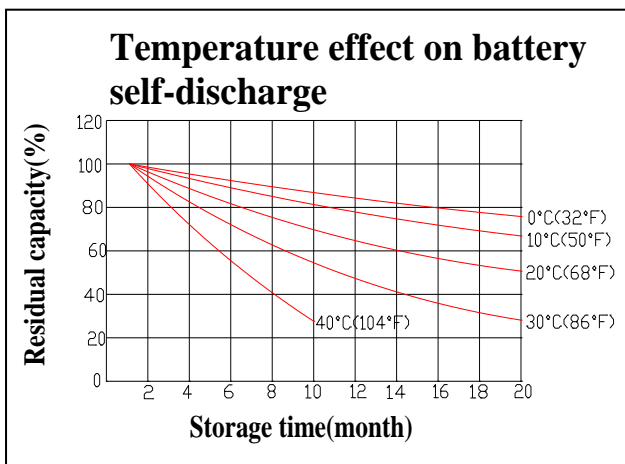
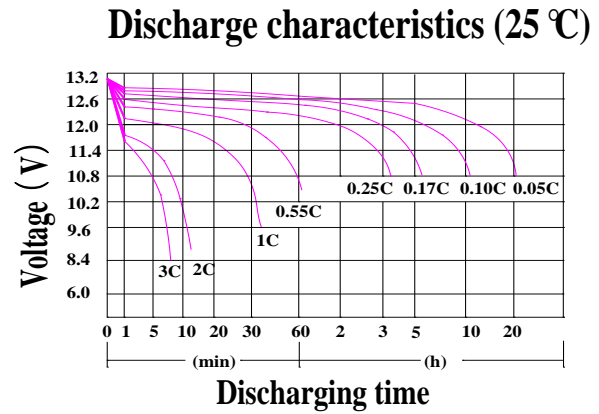
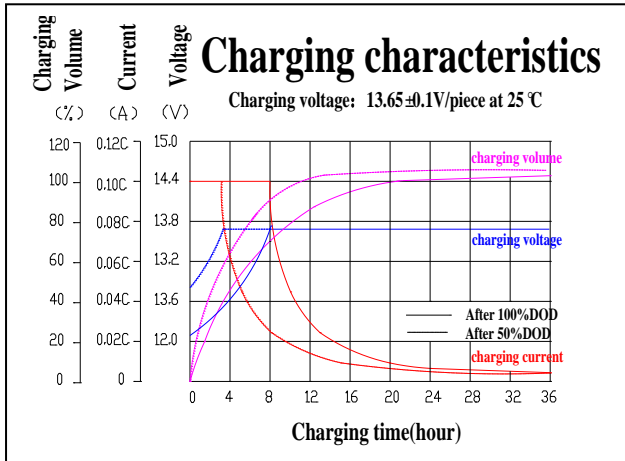
| F.V/Time | 5min | 10min | 15min | 30min | 45min | 1h   | 2h  | 3h  | 5h  | 8h  | 10h  | 20h  |
|----------|------|-------|-------|-------|-------|------|-----|-----|-----|-----|------|------|
| 1.60V    | 80.7 | 53.8  | 40.5  | 25.2  | 18.1  | 16.0 | 9.7 | 7.1 | 4.6 | 2.8 | 2.50 | 1.39 |
| 1.65V    | 75.7 | 50.4  | 38.8  | 24.5  | 17.6  | 15.5 | 9.6 | 7.0 | 4.5 | 2.8 | 2.47 | 1.37 |
| 1.70V    | 74.4 | 49.6  | 37.1  | 23.9  | 17.1  | 15.1 | 9.4 | 6.9 | 4.4 | 2.7 | 2.45 | 1.36 |
| 1.75V    | 66.8 | 44.5  | 35.5  | 23.2  | 16.6  | 14.7 | 9.2 | 6.7 | 4.4 | 2.7 | 2.42 | 1.35 |
| 1.80V    | 63.0 | 42.0  | 33.8  | 22.5  | 16.2  | 14.3 | 8.9 | 6.5 | 4.3 | 2.7 | 2.40 | 1.33 |

**Discharge Constant Power per Cell (Watts at 77°F 25°C)**

| F.V/Time | 5min  | 10min | 15min | 30min | 45min | 1h   | 2h   | 3h   | 5h  | 8h  | 10h | 20h |
|----------|-------|-------|-------|-------|-------|------|------|------|-----|-----|-----|-----|
| 1.60V    | 150.5 | 100.3 | 75.6  | 47.0  | 33.7  | 29.8 | 18.1 | 13.3 | 8.5 | 5.2 | 4.7 | 2.6 |
| 1.65V    | 141.1 | 94.0  | 72.4  | 45.8  | 32.8  | 29.0 | 17.8 | 13.0 | 8.4 | 5.2 | 4.6 | 2.6 |
| 1.70V    | 138.7 | 92.4  | 69.3  | 44.5  | 31.9  | 28.2 | 17.5 | 12.8 | 8.3 | 5.1 | 4.6 | 2.5 |
| 1.75V    | 124.6 | 83.0  | 66.1  | 43.2  | 31.0  | 27.4 | 17.1 | 12.5 | 8.2 | 5.1 | 4.5 | 2.5 |
| 1.80V    | 117.6 | 78.3  | 63.0  | 42.0  | 30.1  | 26.6 | 16.7 | 12.2 | 8.1 | 5.0 | 4.5 | 2.5 |

**Note** The above data are average values, and can be obtained within 3 charge/discharge cycles. These are not minimum values. Cell and battery designs/specifications are subject to modification without notice. Contact **US** for the latest information.

**Performance Characteristics**



**Battery Construction**

| Component    | Positive plate | Negative plate | Container | Cover | Safety valve | Terminal | Separator  | Electrolyte   |
|--------------|----------------|----------------|-----------|-------|--------------|----------|------------|---------------|
| Raw material | Lead dioxide   | Lead           | ABS       | ABS   | Si-Rubber    | Lead     | Fiberglass | Sulfuric acid |